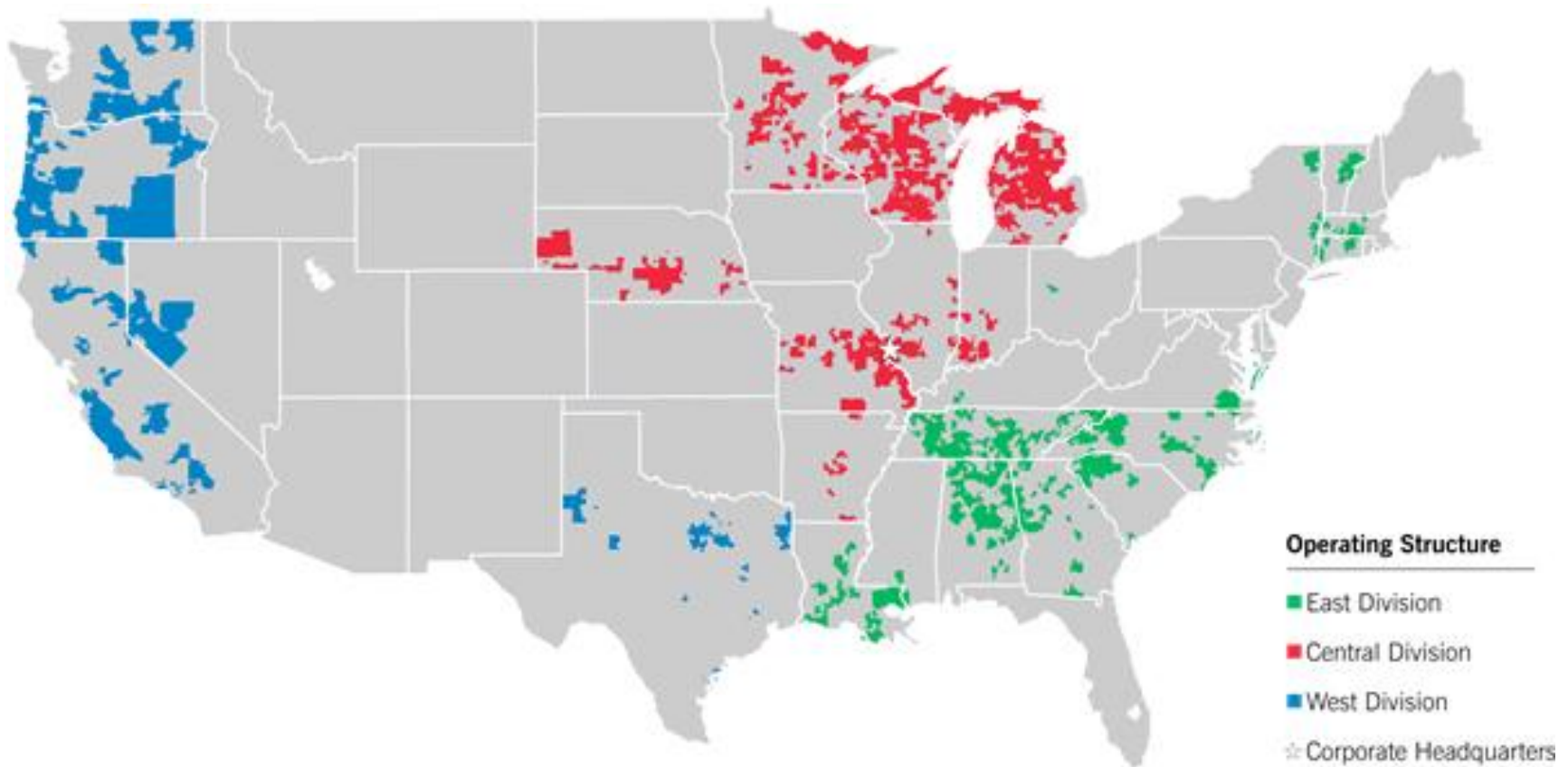




Charter Communications Midwest Operations

Tucker Carlson

**Director of Government Relations
Minnesota/Nebraska KMA**



Charter Communications is the 3rd largest publicly traded cable operator serving approximately 5.6 million customers in 28 states.



Charter maintains well over 250,000 fiber miles throughout the Upper Midwest.



Charter's Rochester based ops employs over 650 & they connect 275,000 customers in over 200 Minnesota cities & towns with 50,000 fiber miles



Charter offers 3 residential speeds

5Mbps x 512kbps - \$44.99

10Mbps x 1Mbps - \$54.99

16Mbps x 2Mbps - \$69.99

- **Over 550,000 MN homes have access to services**
- **90% of customers take the lowest speed**
- **The average customer consumes 7-8Gbps a month**
- **1.2% of customers consume 25% of the bandwidth**
- **The top 1.2% consume over 3,300 terabytes a month**
- **All Business services, including Fiber Ethernet, are available in residential areas**



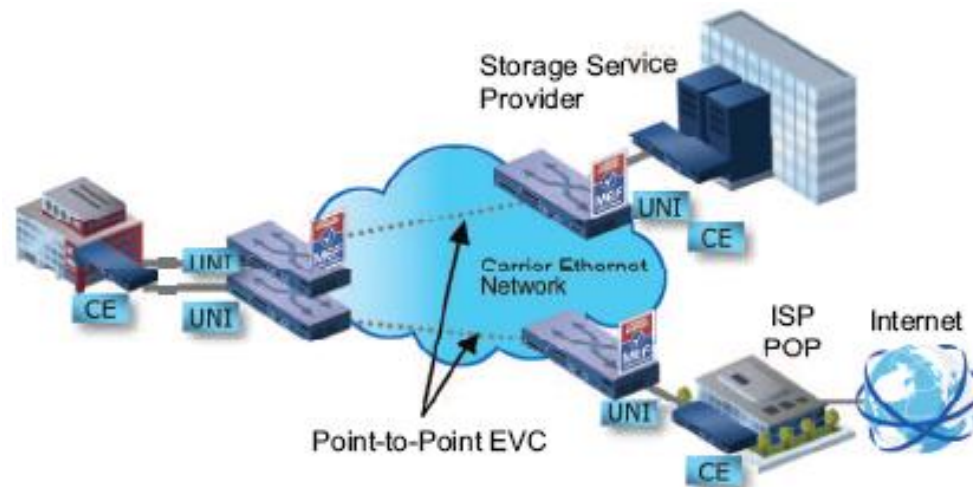
Charter Business Optical Ethernet service offers reliable, ultra-fast Ethernet connectivity with speeds ranging from 10Mbps (Mega-bytes per second) up to 10Gbps (Giga-bytes per second), in 10Mbps increments.

Charter Communications has obtained the Metro Ethernet Forum (MEF) certification. The MEF is a global industry alliance created to develop technical specifications and implementation agreements to promote interoperability and deployment of Carrier Ethernet worldwide.



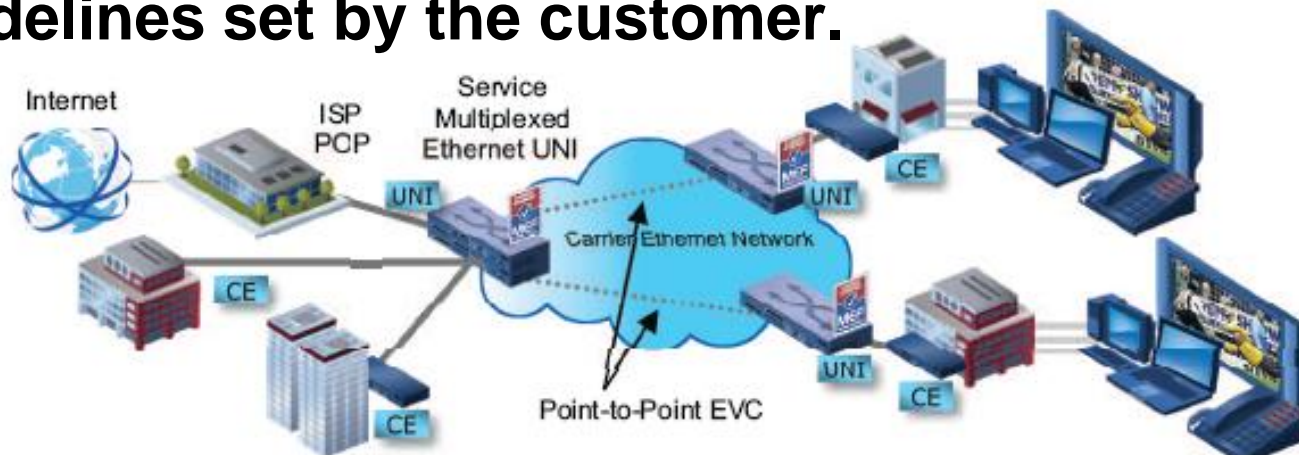


- **EPL - Ethernet Private Line**
- **A point-to-point Ethernet configuration that offers a committed information rate connection. It also allows the customer to configure the connection to carry data and voice traffic, as well as other IP applications. EPL allows full control of the network with the point-to-point connection.**



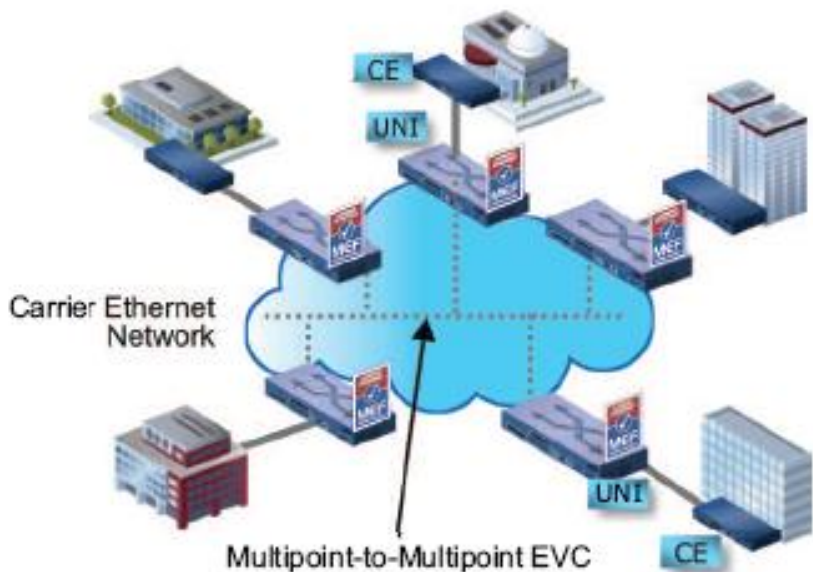


- **EVPL - Ethernet Virtual Private Line**
- **EVPL provides a point to multipoint connection to link a central headquarters or data center to multiple offices. In addition to offering multipoint connectivity and hub and spoke configuration, EVPL doesn't require dedicated IT staff to manage. Charter's Business personnel handle the configuration and management of the connections based on quality-of-service guidelines set by the customer.**





- **E-LAN - Ethernet LAN**
- **E-LAN service offers multipoint-to-multipoint connectivity providing flexibility, connecting all locations to create a secure, shared-data network. E-LAN can also mix in point-to-multipoint connections, allowing the customer to route traffic securely between any endpoints. E-LAN offers the greatest degree of network flexibility.**





Some Charter Business Fiber users

- **OET – MN Office of Enterprise Technology**
- **MNSCU – MN State Colleges & Universities**
- **Rochester Area Hospitals**
- **St. Cloud Hospitals**
- **Allina Clinics**
- **Verizon Wireless**
- **Cabela's**
- **Schwan's**
- **St. Louis County**
- **Rochester Public Schools**
- **Enbridge Energy**
- **St. John's, St. Scholastica, St. Benedict's**